

TOWN OF CAPE ELIZABETH, MAINE

PROPERTY MAPS



James H. Thomas
gisSolutions of Maine
Cumberland, Maine
jht@maine.rr.com

These maps are intended to be used for the purpose of Property Tax Assessments and should not be used for conveyances.
Revised to April 1, 2009

Scale: 1 inch = 100 feet

2009

U60

2

30

0 100 200 Feet

2

R05-2

R04-2

R04-1

U46

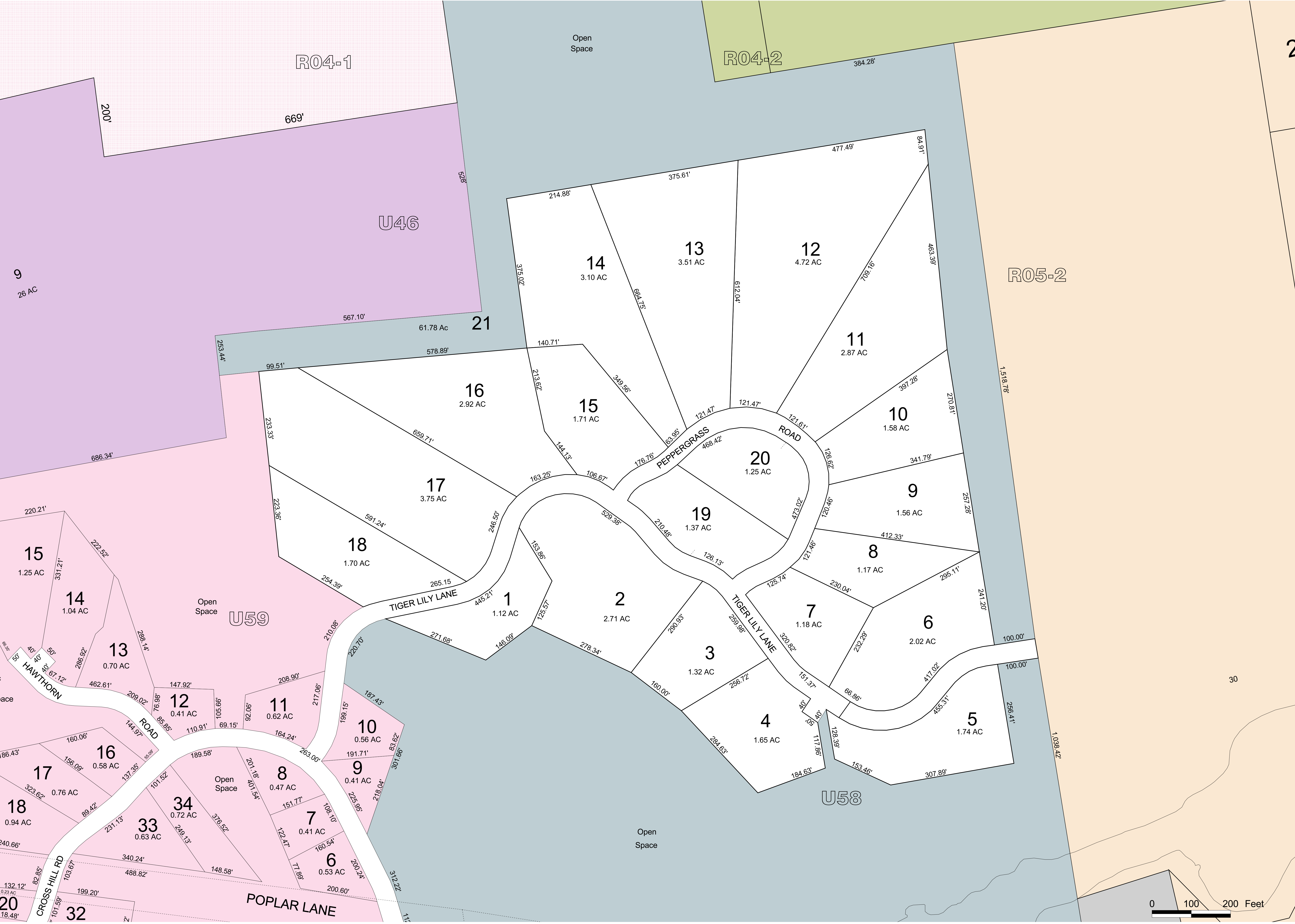
U59

U58

Open Space

Open Space

Open Space



9

26 AC

15

1.25 AC

14

1.04 AC

13

0.70 AC

12

0.41 AC

16

0.58 AC

17

0.76 AC

18

0.94 AC

20

0.23 AC

18.48'

32

11.11'

34

0.72 AC

33

0.63 AC

7

0.41 AC

11.11'

8

0.47 AC

9

0.41 AC

6

0.53 AC

200.24'

11.11'

10

0.56 AC

11

0.62 AC

8

0.47 AC

200.24'

11.11'

12

0.41 AC

13

0.70 AC

14

1.04 AC

288.14'

11.11'

13

0.70 AC

14

1.04 AC

15

1.25 AC

331.21'

11.11'

16

0.58 AC

17

0.76 AC

18

0.94 AC

323.62'

11.11'

18

0.94 AC

19

1.37 AC

20

1.25 AC

468.42'

11.11'

21

61.78 AC

16

2.92 AC

17

3.75 AC

659.71'

11.11'

18

1.70 AC

19

1.37 AC

20

1.25 AC

178.76'

11.11'

19

1.37 AC

20

1.25 AC

21

61.78 AC

578.89'

11.11'

20

1.25 AC

21

61.78 AC

22

2.87 AC

477.49'

11.11'

21

61.78 AC

22

2.87 AC

23

1.58 AC

397.28'

11.11'

22

2.87 AC

23

1.58 AC

24

1.56 AC

412.33'

11.11'

23

1.56 AC

24

1.56 AC

25

1.17 AC

230.04'

11.11'

24

1.17 AC

25

1.17 AC

26

2.02 AC

417.02'

11.11'

25

2.02 AC

26

2.02 AC

27

1.18 AC

320.82'

11.11'

26

2.02 AC

27

1.18 AC

28

1.32 AC

256.72'

11.11'

27

1.18 AC

28

1.32 AC

29

2.71 AC

278.34'

11.11'

28

2.71 AC

29

2.71 AC

30

1.25 AC

468.42'

11.11'

29

1.25 AC

30

1.25 AC

31

1.58 AC

270.81'

11.11'

30

1.58 AC

31

1.58 AC

32

2.87 AC

483.39'

11.11'

31

2.87 AC

32

2.87 AC

33

4.72 AC

612.04'

11.11'

32

4.72 AC

33

4.72 AC

34

3.10 AC

375.61'

11.11'

33

3.10 AC

34

3.10 AC

35

3.51 AC

692.15'

11.11'

34

3.51 AC

35

3.51 AC

36

4.72 AC

477.49'

11.11'

35

4.72 AC

36

4.72 AC

37

6.82 AC

862.15'

11.11'

36

6.82 AC

37

6.82 AC

38

8.49 AC

84.91'

11.11'

37

8.49 AC

38

8.49 AC

39

15.18 AC

1518.78'

11.11'

38

15.18 AC

39

15.18 AC

40

1.56 AC

257.28'

11.11'

39

1.56 AC

40

1.56 AC

41

1.56 AC

257.28'

11.11'

40

1.56 AC

41

1.56 AC

42

1.56 AC

257.28'

11.11'

41

1.56 AC

42

1.56 AC

43

1.56 AC